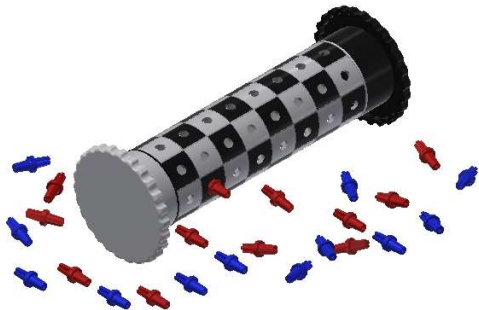


OPEN CHESS/CHECKERS



Game components:

- One playing tube with 64 black and white squares which forms a cylindrical checker/chess board.
- Checkers playing pieces:
 - 12 blue pegs
 - 12 red pegs
- Chess playing pieces:
 - 16 blue pegs
 - 16 red pegs

Playing time: 20 – 60 minutes

Number of players: 2

Ages: 8+

How to Play

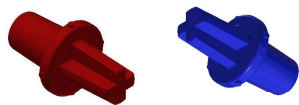
Open Chess/Checkers is a challenging set of 3D strategy board games for two players, based on a checker/chess board wrapped around a cylindrical surface. It has an increased level of difficulty because at all times half of the board is obscured by the cylinder body. It can be revealed only through rotation and that obliges the players to develop a mental display of the entire play area thus greatly improving their 3-D visualization skills.

Additionally, there are no left or right borders which provides an unlimited lateral playing surface.

Separate game pieces are provided for chess and checkers. The chess pieces are the regular chess playing pieces but with a different design to be more easily recognized in the 3D setting. The checkers pieces are inverted when a playing piece is “kinged.” The flip side of the playing piece has different design to distinguish it from the “unkinged” pieces.

Players follow the same rules as used in regular checker and chess games.

Design of chess pieces



Checker pegs

Pawn



Rook



Knight



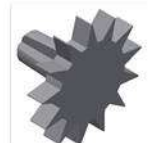
Bishop



Queen



King



3D LoneStar, LLC.

San Antonio, Texas

3DLoneStar@gmail.com